



For The ON-THE-GO Pet™

INSTRUCTION MANUAL

DESIGNER StRamp

PG9916DBG/PG9916DCH/PG9916DSG/PG9916DTN



To see our full line of products, visit us online at: www.petgearinc.com

CUSTOMER SERVICE HELP DESK

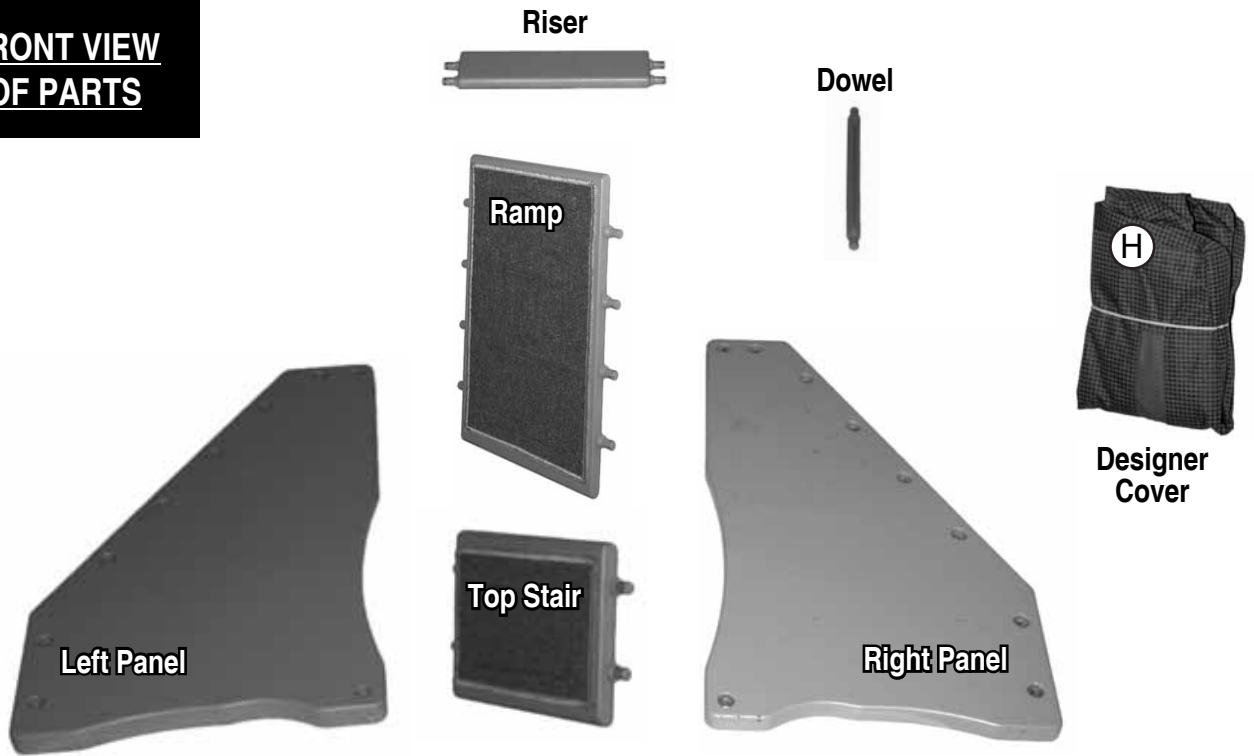
customerservice@petgearinc.com

Toll-Free 877-752-9123 - Eastern Standard Time 8am-3pm, Monday through Friday

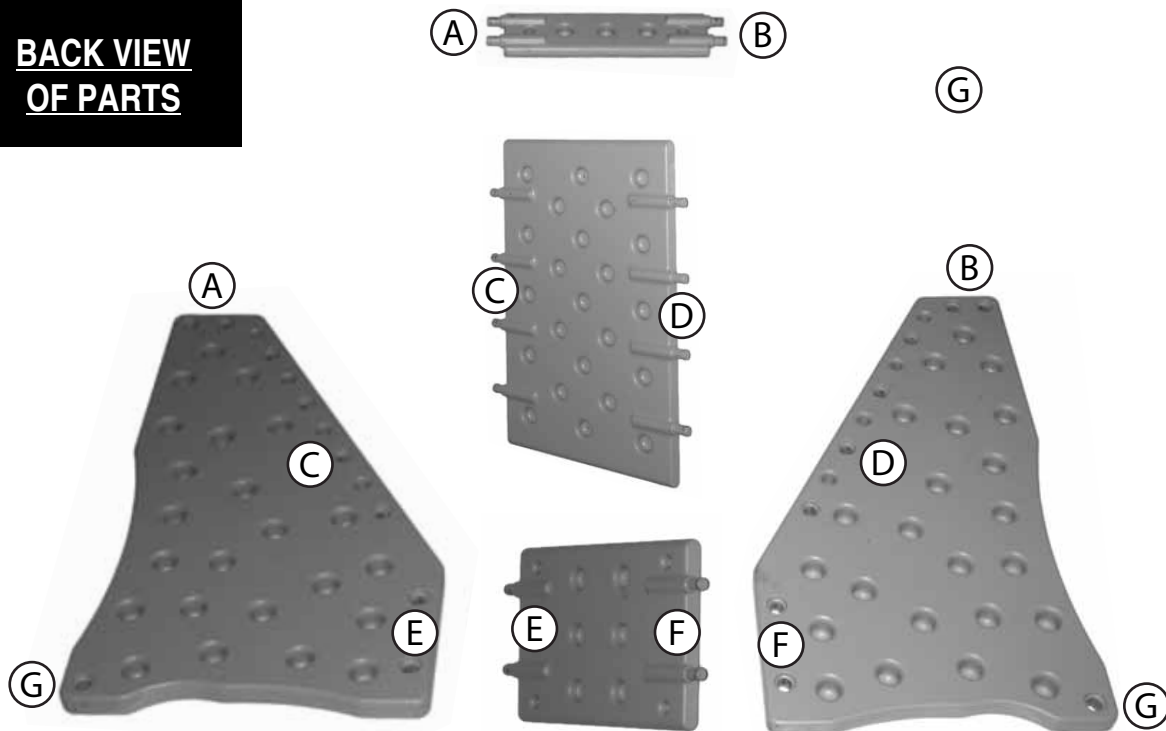
PARTS LIST

Check that you have all the parts shown BEFORE assembling your product.
If any parts are missing, call Customer Service.

FRONT VIEW OF PARTS



BACK VIEW OF PARTS

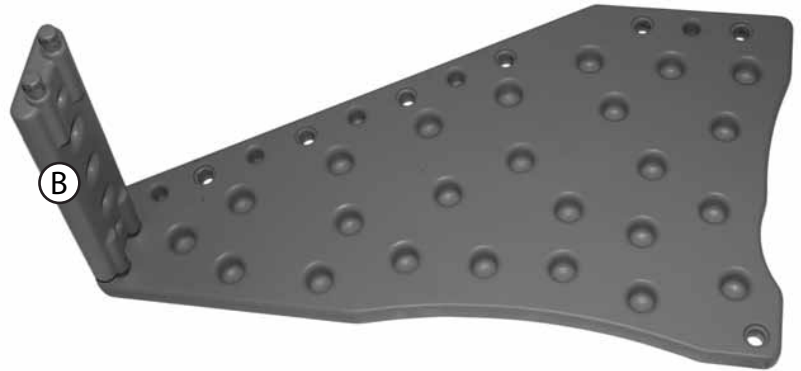


ASSEMBLY INSTRUCTIONS

Step 1. Place right panel on floor with **PET GEAR** Logo facing the floor and insert riser, lettered (B).

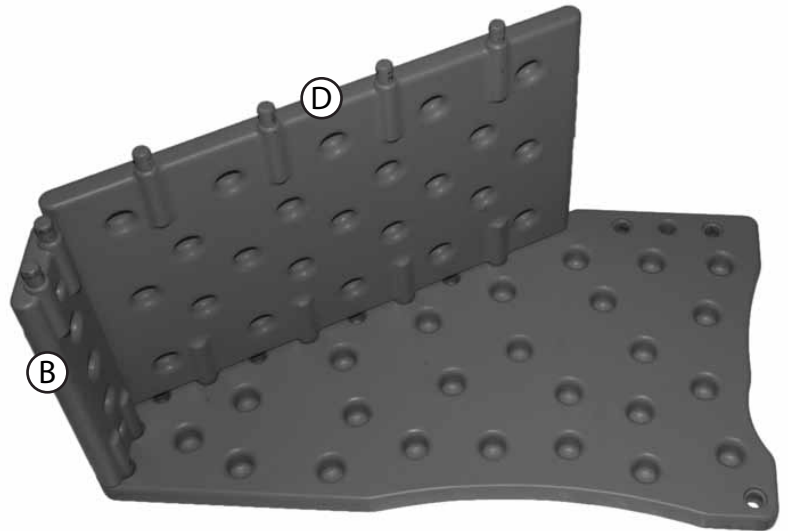
Make sure there are no gaps between parts after inserting.

(If inserting part is difficult put a little dish soap on doweled end before inserting.)



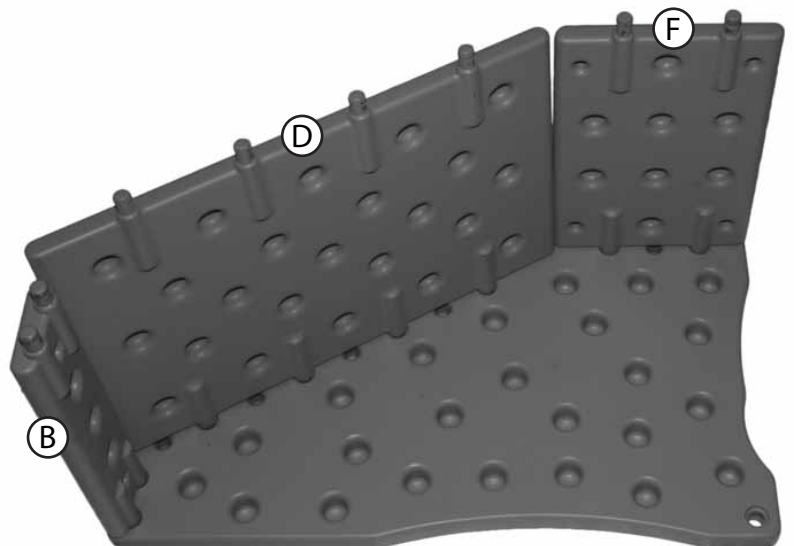
Step 2. Insert ramp, lettered (D).

Make sure there are no gaps between parts after inserting.



Step 3. Insert top stair, lettered (F).

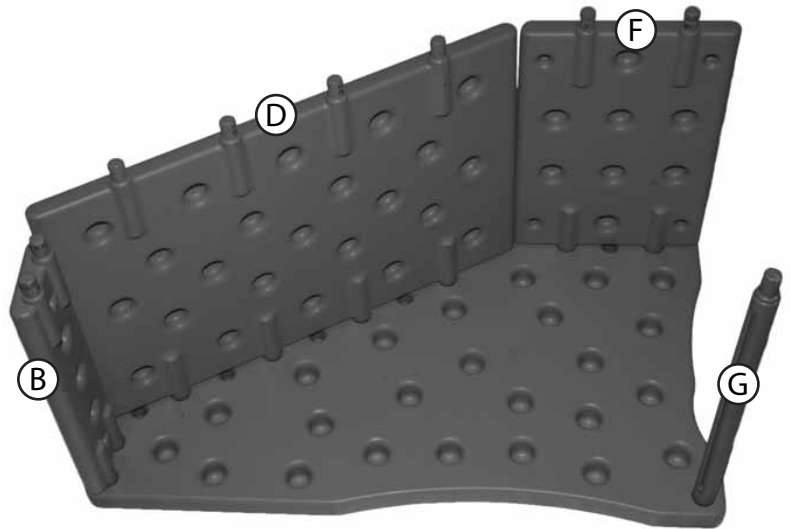
Make sure there are no gaps between parts after inserting.



ASSEMBLY INSTRUCTIONS

Step 4. Insert dowel, (G).

Make sure there are no gaps between parts after inserting.



Step 5. Attach left panel.

Align all holes before pushing panel down.

Make sure there are no gaps between parts after inserting.



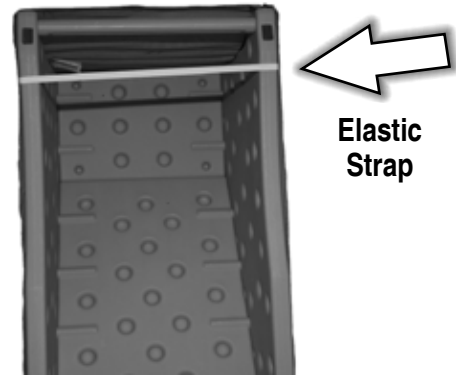
Stramp shown fully assembled.



COVER INSTRUCTIONS

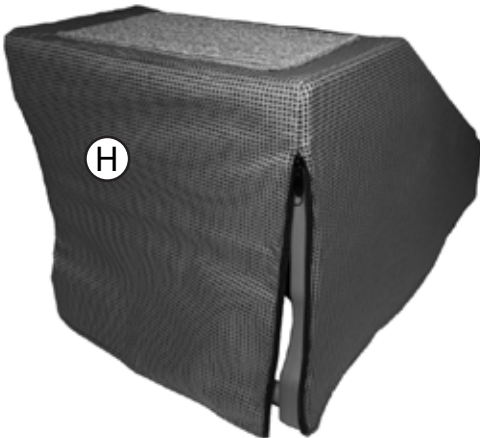
Step 1. Unfold the Designer Cover, (H), and drape it over the steps.

Pull the elastic strap over the bottom of the StRamp.

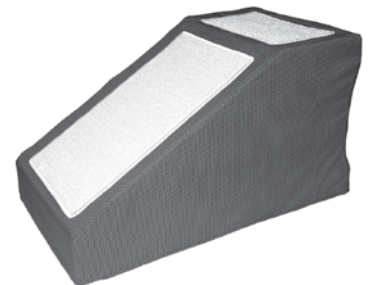
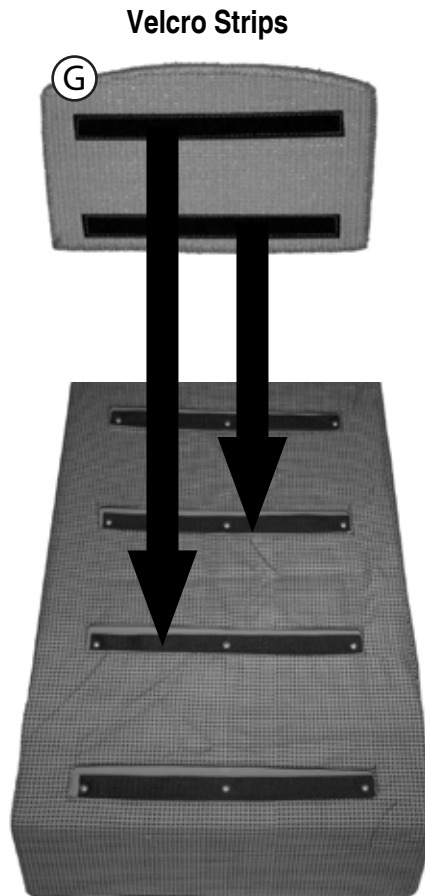


Bottom View

Step 2. Pull the zipper down toward the floor.



Step 3. Place carpet treads, (G), on top of the StRamp and connect with Velcro strips.



StRamp shown with cover on.

⚠ WARNING!

FOR PETS ONLY.

Not intended to be used as a restraining device for aggressive or dangerous animals that dig, chew or paw aggressively. Do not leave your pet unattended. **PET GEAR** is not liable for any damage caused by aggressive, destructive, immature or untrained animals. Do not use near an open or exposed flame. Failure to follow these warnings and the instructions could result in serious injury or death.

REPLACEMENT PARTS

Use only **PET GEAR** replacement parts.

Please have your model number ready before calling.

You can also request parts: <http://www.petgearinc.com/main.asp?sel=2>



PO Box 99·West Rutland, VT·05777·877-752-9123·www.petgearinc.com